



Sydenham to Bankstown

Making way for Sydney Metro

# Southwest Link update

June 2025



Southwest Link buses provide a free, high frequency service between Sydenham and Bankstown, helping you get to where you need to go.

We're keeping you up-to-date with the progress of the Southwest Metro extension and anything you need to know about getting around using Southwest Link.

## Read on for information about: Riding to Sydenham Station

- More people are riding to Sydenham Station – here's why
- Sydney Metro reaches major milestone
- T6 Line trains resume from 30 June 2025
- Emergency Roadwork
- Passenger count – Bluetooth technology trial
- Tips for a safe and comfortable journey

### Southwest Link bus service frequency



**Every 2 to 4 minutes**  
during peak periods



**At least every 10 minutes**  
across most of the day



**At least every 15 minutes**  
late at night



# Southwest Link update

June 2025

## More people are riding to Sydenham Station – here's why

If it feels like there are more bikes around Sydenham lately, you're right. Since the metro opened in October last year, there's been a steady rise in the number of people riding to the station.

### Bike routes to the station

Part of this shift is the network of Southwest Link bike routes. These routes are designed to make riding easier and safer, with better signage, traffic calming measures, and connections to local destinations – like Sydenham Station.

### It's easy to park

For people riding to Sydenham Station, there are few different options for bike parking. The secure bike shed is a popular choice, especially for regular commuters. It's free and easy to access **by linking your Opal card here**. Outdoor bike racks are also available with more recently added to meet growing demand.

### Grab a share bike and go

If you're using a share bike, a designated parking area has been set up on Sydenham Road to help keep things tidy and convenient.



### Keen to start riding?

The **Southwest Link Riding and Walking web page** has a range of resources, including route maps, tips, and stories from other local riders. You'll also find details about free bike skills courses, tune-ups, and events designed to help people get started or build confidence.

If you're thinking of riding once or twice a week, check out the **Hurlstone Park to Sydenham Station bike route**.

If you just want to give bike riding a go, we recommend the **Cooks River Shared Path** for a traffic-free local ride from Campsie to Tempe Station.

## Shared path upgrade and temporary detour – Marrickville Station

We're upgrading the shared path alongside Marrickville Station, between Riverdale Avenue and Victoria Road, making it wider and easier to use.

This section of the path is planned to close from late July for up to 12 weeks while the upgrade work takes place. During this time, please follow the short detour along Riverdale Avenue and Charlotte Avenue.

Signs will be in place ahead of the change to provide advance notice and show you where to go.





# Southwest Link update

June 2025

## Sydney Metro reaches major milestone

In an exciting step to convert the 130-year old former T3 Bankstown Line to modern metro standards, initial testing has begun on the newly upgraded tracks between Sydenham and Campsie.



### First Metro from Sydenham to Bankstown

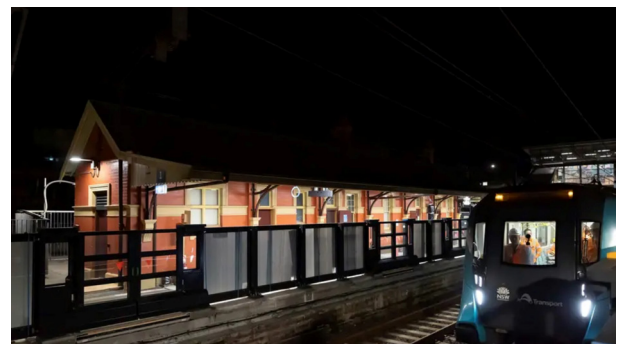
(Watch this video)

The first test train successfully completed the 6.5 kilometre journey in the early hours of 3 April, under the control of an operator and with a team of rolling stock engineers monitoring progress on board. When the Metro extension opens in 2026, this journey will take just 11 minutes.

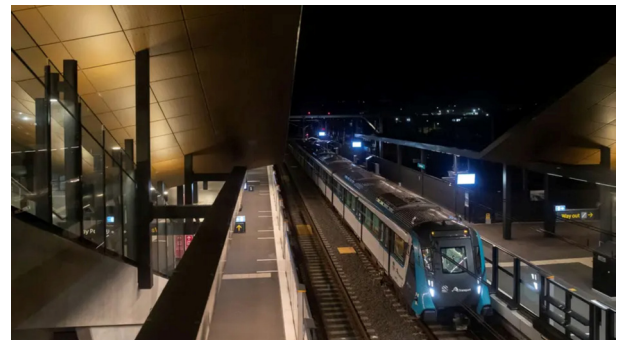
This marked the start of a detailed testing and commissioning program, with more than 6,500 hours of testing planned along the line between Sydenham and Bankstown.

Tests during this initial phase will see the train travel at speeds under 25km/h and include:

- 'Car-Car Clearance Test' to ensure all curves/turns are negotiated without issue
- Kinetic Envelope Testing to verify the safe distance between the sides of the train and the station platforms.
- Platform screen door interface checks and mechanical gap filler tests.
- Communications tests, including radio and static system checks.
- Testing a train under loaded conditions, where the train is filled with water containers to simulate a train filled with passengers.



Rolling stock engineers monitor testing progress on board the test train



The first Metro train completed its inaugural 6.5-kilometre journey from Sydenham to Campsie Station



Metro testing

## Stay up-to-date about Metro trackwork

During testing, there will be several full or partial line closures of the M1 North West & Bankstown Line.

Passengers should check their preferred transport apps regularly or visit [transportnsw.info/trip](https://transportnsw.info/trip) before travelling.





# Southwest Link update

June 2025

## T6 Line trains resume from 30 June 2025

Train services on the T6 Line between Lidcombe & Bankstown will resume from 2am Sunday 30 June 2025 following the successful completion of 63 days of essential trackwork and upgrades by the Sydney Metro team.

Thank you for your understanding during this period, especially those who relied on replacement bus services to complete their journeys. We understand this is a disruptive time for passengers and we appreciate your patience.

To plan your journey on the T6 Line, please visit: [transportnsw.info/plan](https://transportnsw.info/plan) or check the **Opal** or other **travel apps**.

## Emergency Roadwork

Until 31 July 2025, there will be overnight road closures on parts of The Boulevard, Bridge Road, Peel Street and around the Bankstown bus interchange, due to road repairs.

Passengers are encouraged to check their travel apps and look for electronic message signs and signage at bus stops for any changes to bus services, including Southwest Link, during the night work.

For more information, please visit: [transport.nsw.gov.au/swl-repairs](https://transport.nsw.gov.au/swl-repairs)

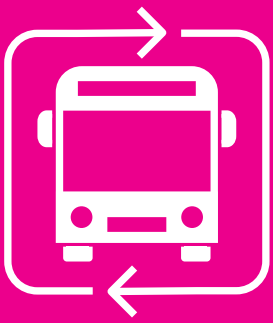


## Passenger count – Bluetooth technology trial

Until 24 July, Transport is trialling new Bluetooth technology on Southwest Link buses to help improve the way we plan services.

The Bluetooth technology counts the number of passengers on a bus by recognising and counting the number of nearby Bluetooth signals. This enables Transport to better understand passenger demand levels and allocate services more efficiently.

For more information about the trial, please see our Frequently Asked Questions at: [transportnsw.info/southwest-link](https://transportnsw.info/southwest-link)



Sydenham to Bankstown

Making way for Sydney Metro

# Southwest Link update

June 2025

## Safety and comfort when travelling on Southwest Link

We know that the T3 conversion period is a disruptive time for our passengers, and at busy times there may be queues while you wait for your bus.

Here are some tips to help keep your journey, and the journey for those around you, safe and comfortable particularly during peak travel periods.

### At the bus stop and getting on and off the bus

- Join the queue at the bus stop to help keep the footpath clear and allow others to walk by safely.
- Keep your place in the queue and allow passengers to get off before you get on.
- Watch your step when getting on and off the bus.
- Board via the front door and ask the driver to lower the bus if you need assistance.
- When getting off the bus, use the doors that are nearest to you. If you require assistance, use the front door.

### On board the bus

- If seated, offer your seat to someone who needs it more than you. This includes people who are older, who have a disability or impaired mobility, who are pregnant or travelling with children.
- If seats aren't available, move to the back of the bus and hold onto the handrails and straps.

## Contact us

For enquiries, complaints or feedback, our team will remain available via the contact details below.



Project Infoline **131 500**



[southwestlink@transport.nsw.gov.au](mailto:southwestlink@transport.nsw.gov.au)

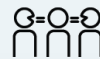


<https://transportnsw.info/southwest-link>



Sydney Metro

24-hour community info line: **1800 171 386**



**Interpreter service**

For languages other than English call **131 450**  
Arabic • Greek • Hindi • Mandarin • Vietnamese

بالرقم 131 450 لطلب خدمة الترجمة الشفهية للغات غير الإنجليزية اتصل

Για υπηρεσίες διερμηνείας σε άλλες γλώσσες εκτός από τα Αγγλικά καλέστε το **131 450**

अंग्रेज़ी के अतिरिक्त अन्य भाषाओं के लिए दुभाषिया सेवा पर कॉल करें **131 450**

获取英语以外的其他语言口译协助服务可以致电 **131 450**

Để có dịch vụ thông ngôn cho các ngôn ngữ khác tiếng Anh, gọi số **131 450**